

KAWASAKI STEEL GIHO

Vol.17 (1985) No.3

13Cr

Manufacturing and Characteristics of 13 Cr Stainless Steel Tubing

	(Takao Kawate)	(Tadao Katagiri)	(Toshikazu
Masuda)	(Isao Takada)	(Takao Kurisu)	(Hiroshi
Ohtsubo)			

:

13Cr 2 " 6.5lb/ft(API 5AC L-80)

S 0.002

API L-80	13Cr	CO2
----------	------	-----

13Cr ステンレス鋼管の製造と諸特性*1

川崎製鉄技報
17 (1985) 3, 291-298

河手 崇男*2 片桐 忠夫*3 増田 敏一*4 高田 庸*5 栗栖 孝雄*6 大坪 宏*7

Manufacturing and Characteristics of 13% Cr Stainless Steel Tubing

Takao Kawate, Tadao Katagiri, Toshikazu Masuda, Isao Takada, Takao Kurisu, Hiroshi Otsubo

Synopsis:

5AC L-80) の製造実績をもとに、製造技術および品質特性について述べた。ビレットは、連铸材を用い、熱間加工性を改善するためS量を0.002%以下に抑えた。

Mannesmann mandrel mill, upsetting and heat treatment in Chita Works, Kawasaki Steel Corporation. The billet has been made by continuous casting and rolling at the billet mill. Sulfur content of the billet is lowered to less than 0.002% to improve hot workability. High piercing efficiency of the billet is re-

	°F					°F		
100	1 600	1 800	2 000	2 200	2 400	2 000	2 200	2 400

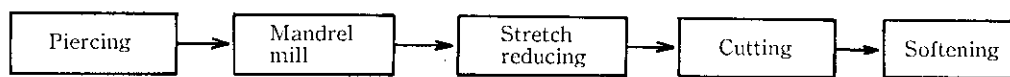
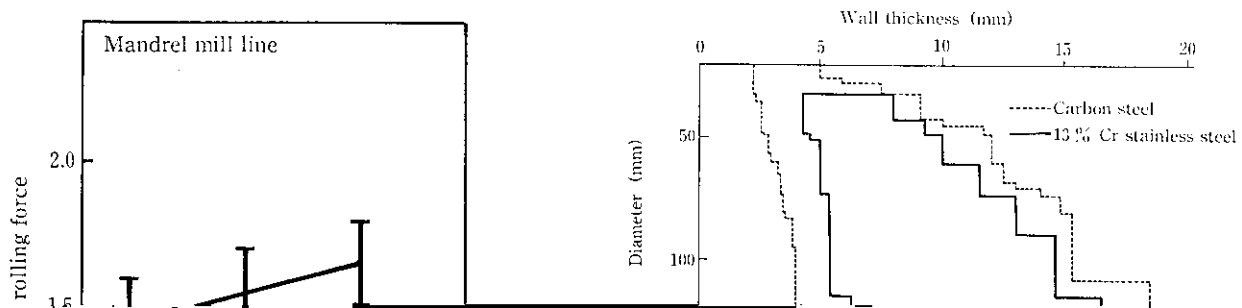
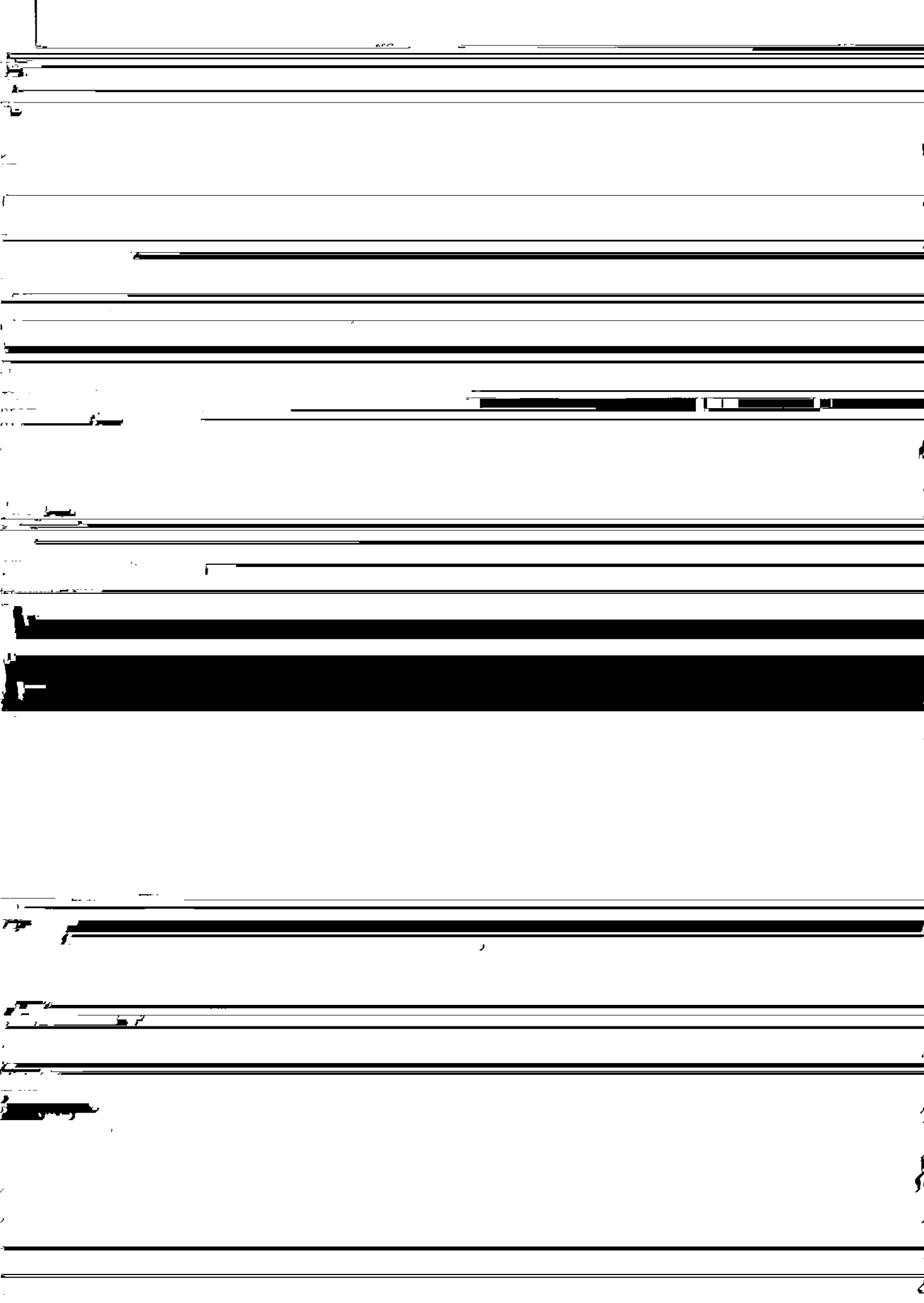
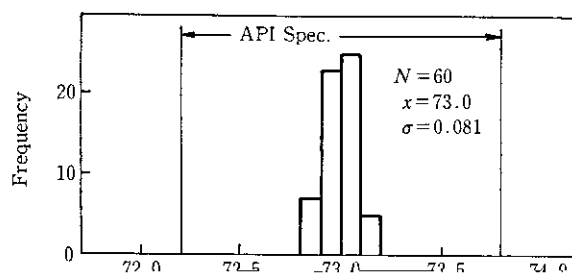
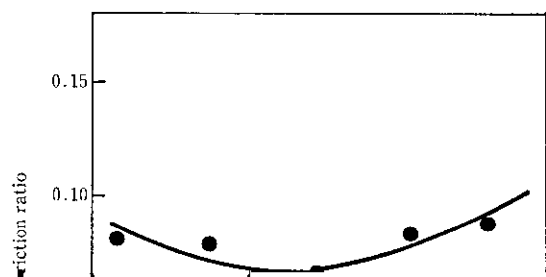


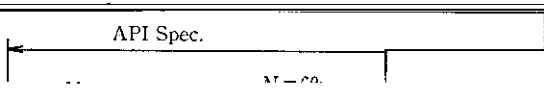
Fig. 7 Manufacturing process of 13% Cr upset-tubing







141



15 % NaCl 80°C	<input type="checkbox"/> Cracking
	<input type="checkbox"/> Small crack
	<input type="checkbox"/> No crack

6 結 言

今回製造した 13Cr アプセットチュービング 27/8"×6.5lb/ft
(ASTM A 312-99) の製造条件は、13Cr 系 ステンレス鋼